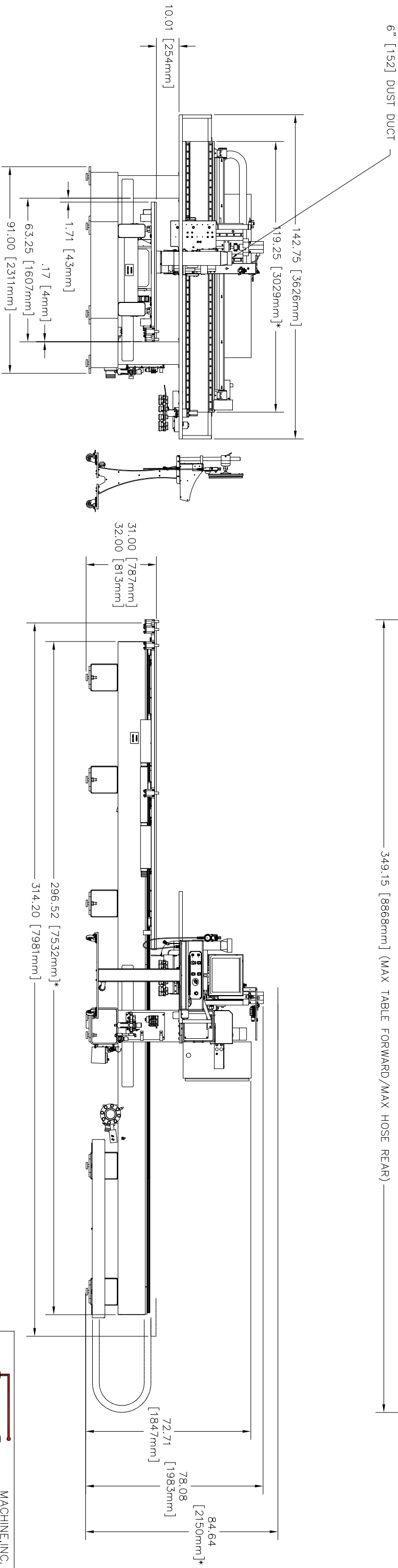
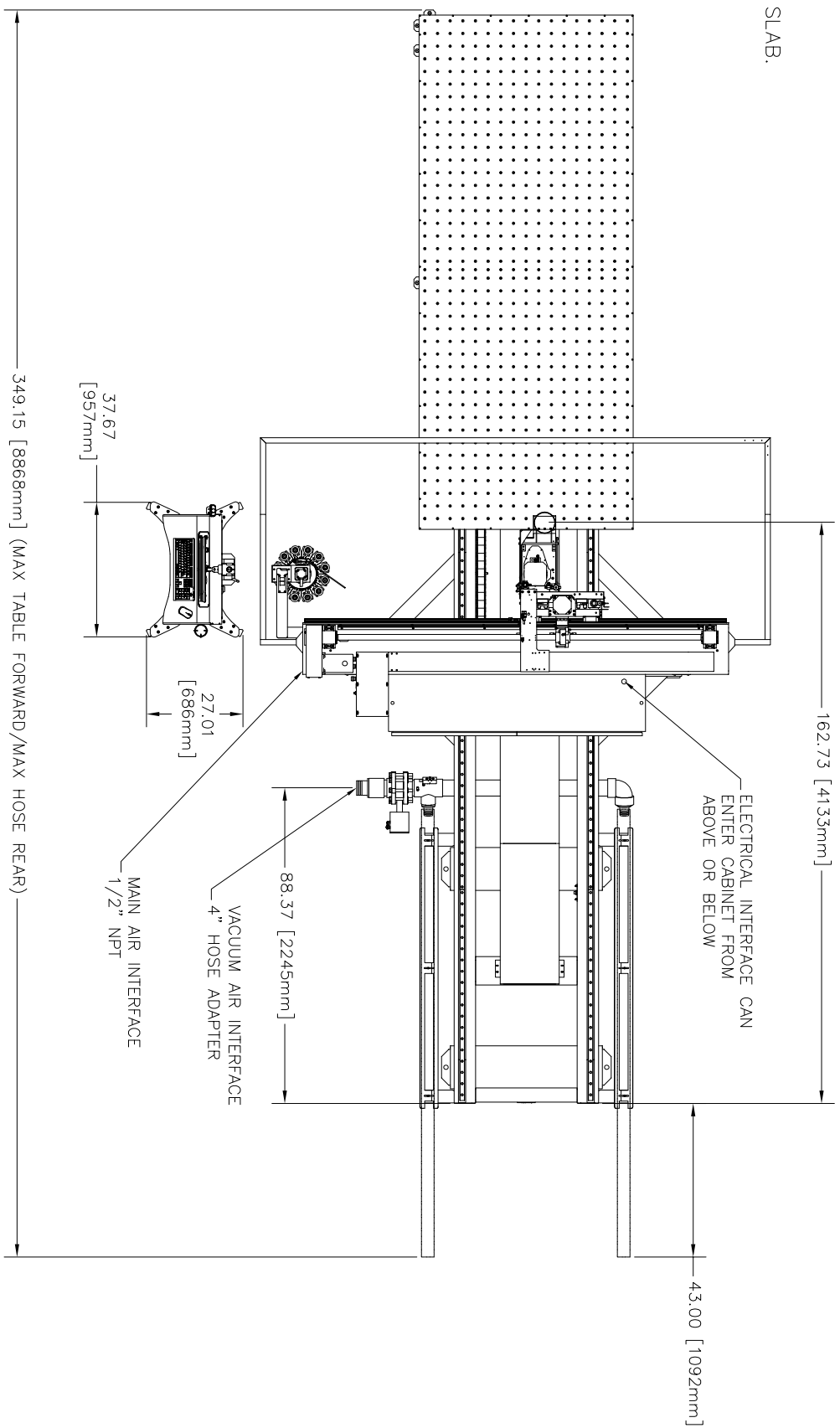


NOTES:

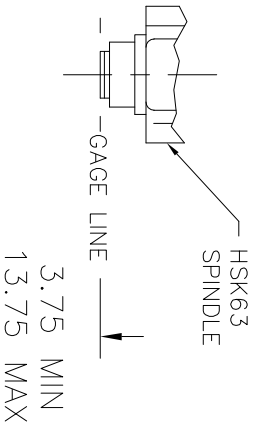
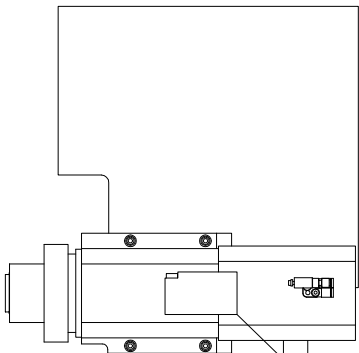
1. MINIMUM 6" [150mm] THICK REINFORCED SINGLE CONCRETE (3000 PSI STRENGTH) SLAB. RECOMMENDED FOR OPTIMUM PERFORMANCE.
2. SAFETY RAILINGS REMOVED FOR SHIPPING.
3. AIR REQUIREMENTS:
95-100 PSI
1/2" NPT MACHINE AIR CONNECTION
20 SCFM
4. ELECTRICAL REQUIREMENTS:

AMPERAGE: SEE ELEC. REQUIREMENTS SHEET IN NEW OWNERS BOOK
MACHINE MUST BE GROUNDED IN ACCORDANCE WITH NEC
5. CRITICAL SHIPPING DIMENSIONS:
GANTRY: 120" [3048mm]
BASE: 297" [7544mm]
HEIGHT: 85" [2159mm]
6. APPROX. WEIGHT:
10,500 LB [4762KG].
7. DUST COLLECTION REQUIREMENTS:
1 HEAD 900 CFM



APPROVED BY		DATE
CUSTOMER		
SALES MGR		
ENGINEER (MCH)	<i>10/2/24</i>	04/06/2018
CHECKER		
ENGINEER (ELEC)		

STANDARD HSK 63F SPINDLE T102 MIST RETENTION BLOCK HI-TEMP BRUSH	512
LEFT EDGE OF TABLE	4.59
RIGHT EDGE OF TABLE	17.50
FRONT EDGE OF TABLE	8.26
BACK EDGE OF TABLE	13.14



STANDARD TABLE
FIXTURE TABLE INCLUDED

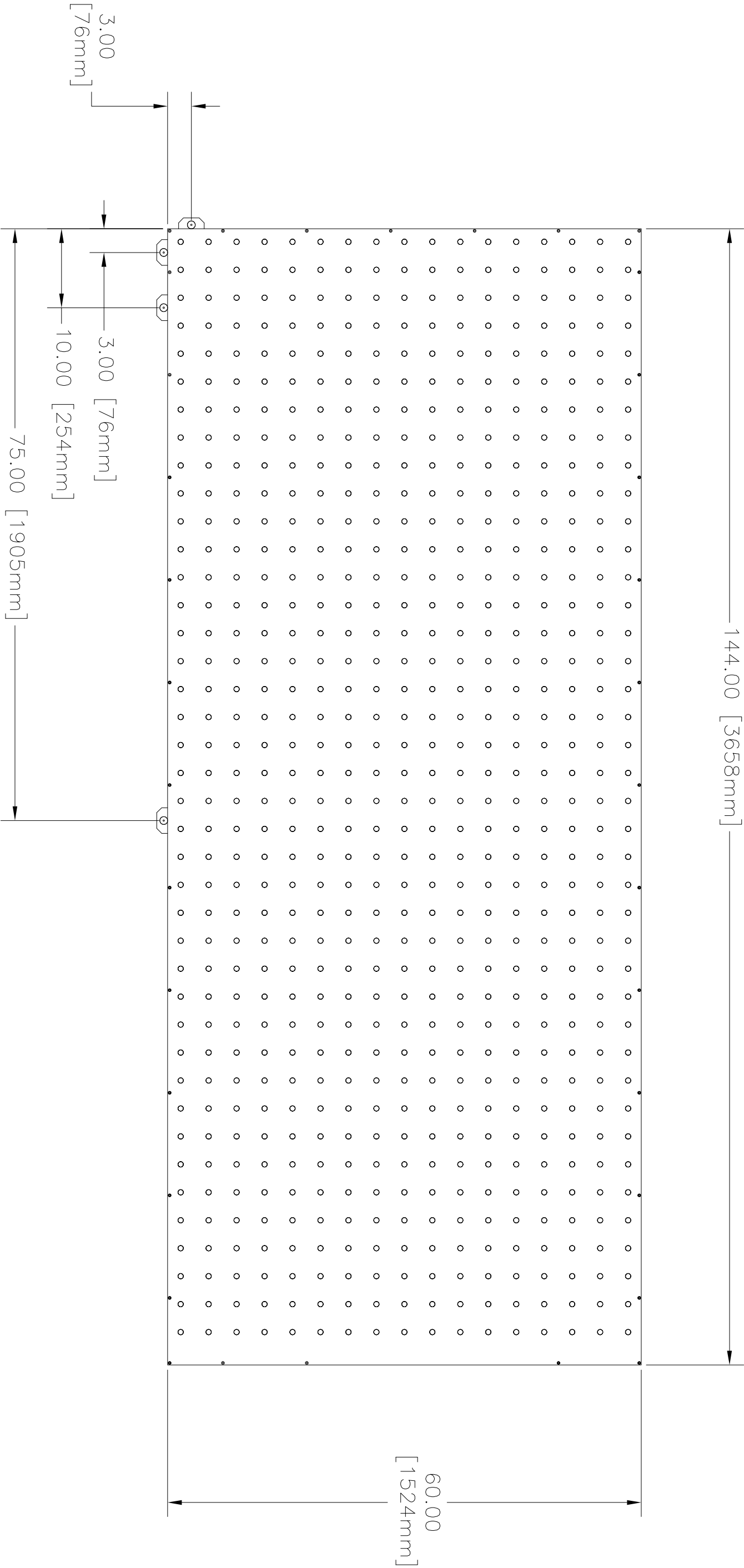
DIMENSIONS SHOWN ARE FROM
GAGE LINE TO TOP OF TABLE
AT BOTH EXTREMES OF PROGRAMMABLE TRAVEL
SHOWN ENLARGED

MACHINE, INC.
(732)-719-6222
1 KOMO DRIVE
LAKEWOOD, NJ 08701


TITLE
SUZHOU ERIC MECH. & ELEC. CO
XTREME XL 512/COVERAGE

SIZE DWG. NO. 101364-18 REV.

SCALE: 1:25 DATE: 04/06/2018 SHEET 2 OF 6



	APPROVED BY	DATE
CUSTOMER		
SALES MGR		
ENGINEER (MECH)	S.S.A	04/06/2018
CHECKER		
ENGINEER (ELEC)		



MACHINE, INC.

(732)-719-6222

1 KOMO DRIVE

LAKEWOOD, NJ 08701

TITLE

SUZHOU ERIC MECH. & ELEC. CO

XTREME XL 512/TABLE

SIZE

D

DWG.NO.

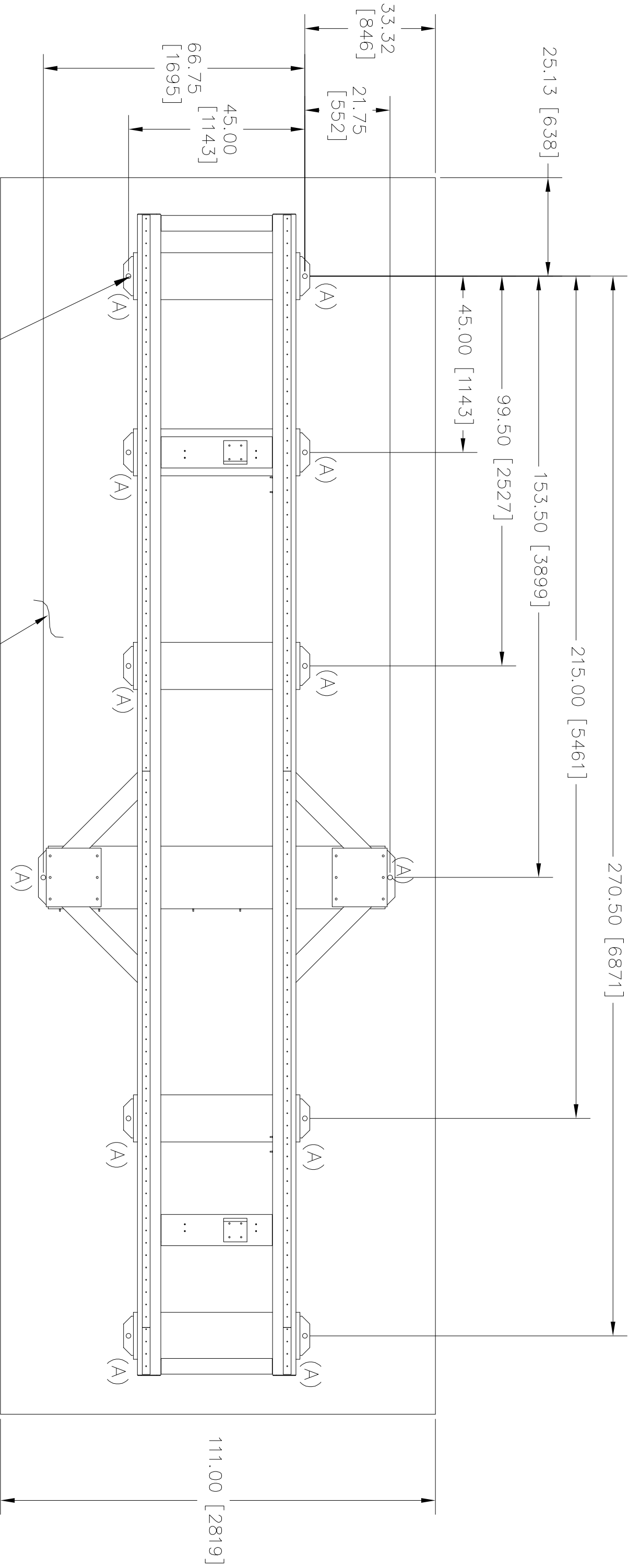
101364-18

REV.

SCALE: 1:25

DATE: 04/06/2018

SHEET 3 OF 6



MIN CONCRETE FOUNDATION
112" WIDTH X 316" LENGTH
6" THICK REINFORCED CONCRETE (3000 PSI STRENGTH)
RECOMMENDED FOR OPTIMUM PERFORMANCE.

315.64 [8017]

(A) ANCHOR BOLT LOCATIONS
1.25" [31mm] DIA HOLE FOR
 $\frac{3}{4}$ [20mm] ANCHOR BOLT
12 PLACES

KOMO MACHINE, INC.
(732)-719-6222
1 KOMO DRIVE
LAKEWOOD, NJ 08701

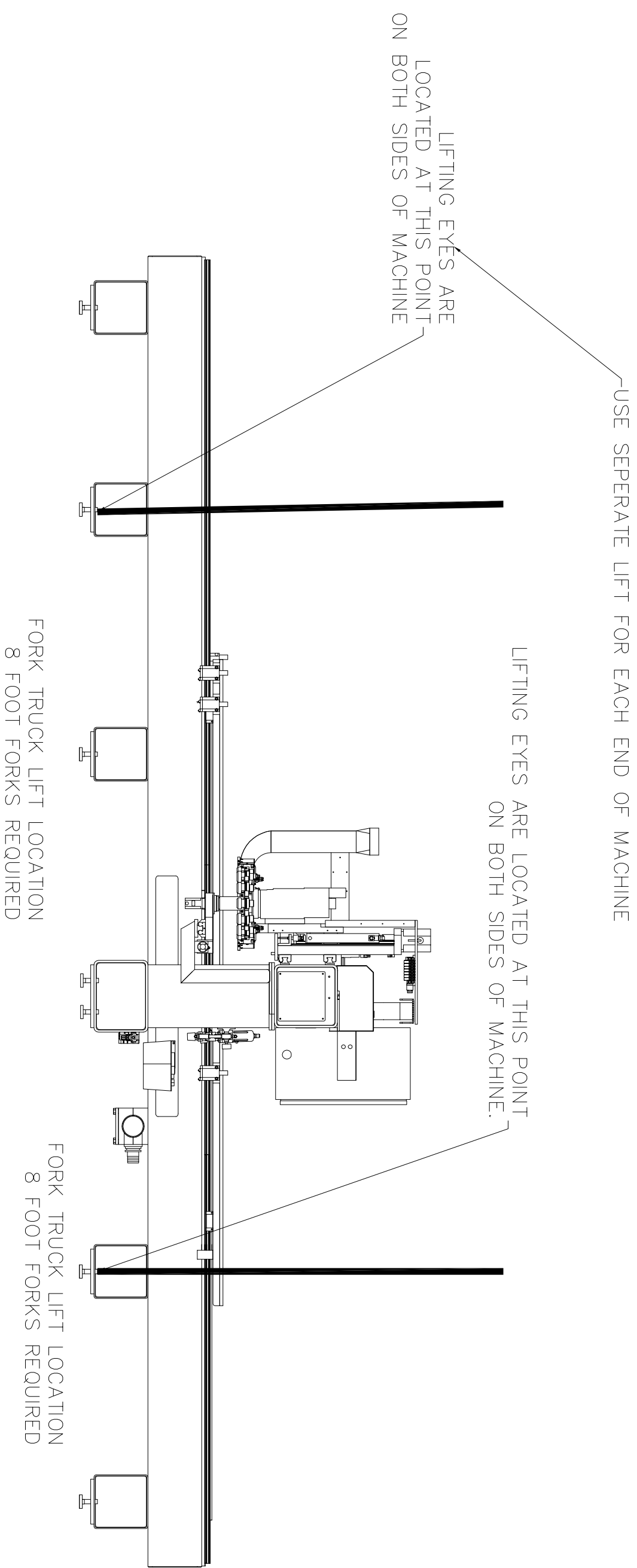
TITLE
SUZHOU ERIC MECH. & ELEC. CO
XTREME XL 512/FOOT PRINT

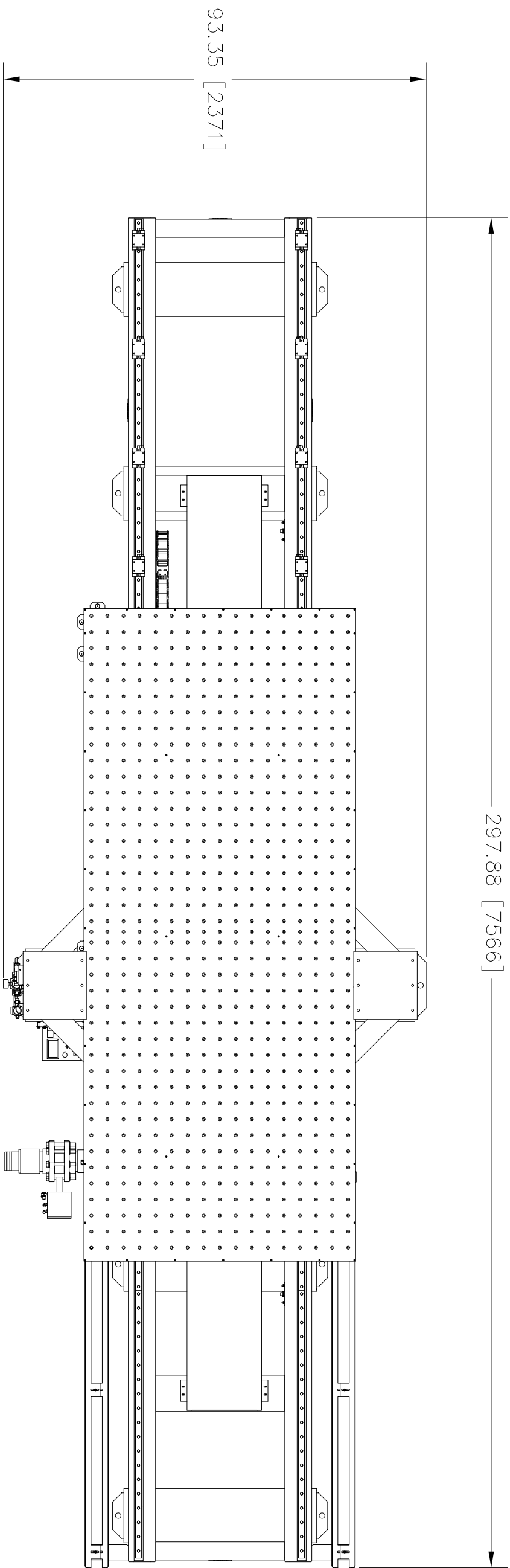
SIZE	DWG. NO.	REV.
D	101364-18	

SCALE: 1:25 DATE: 04/06/2018 SHEET 4 of 6

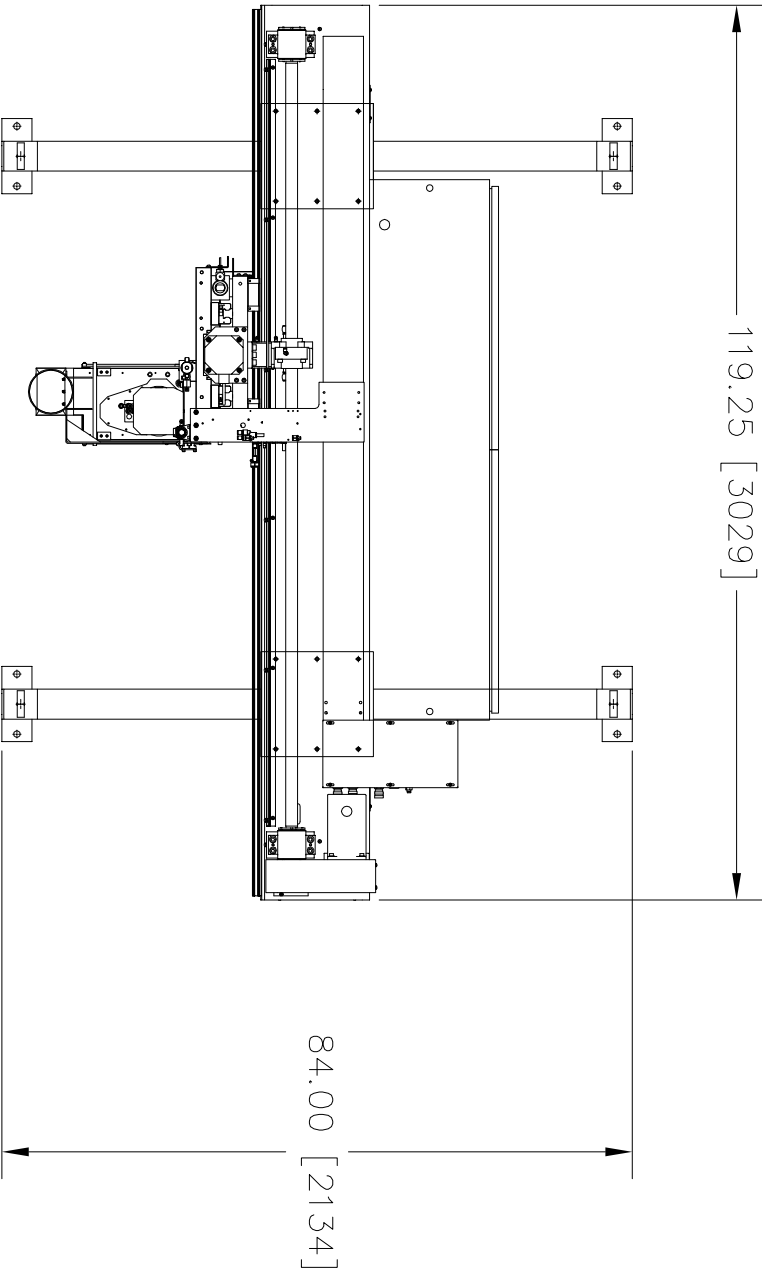
NOTES:

1. FOLLOW THE LIFTING STRAP MANUFACTURER'S INFORMATION FOR WEIGHT LIMITATIONS AND LIFTING STYLES (CHOKE, BASKET, SLING, ETC.) FOR ALL LIFTING STRAPS USED TO LIFT THE ROUTER. IN ADDITION, IF CHAINS ARE USED FOLLOW THE CHAIN MANUFACTURER'S LIFTING REQUIREMENTS AND WRAP PROTECTIVE MATERIAL AROUND THE LIFTING AREAS TO KEEP THE CHAIN FROM DAMAGING THE ROUTER SURFACE.
2. LIFT THE ROUTER WITH TWO CRANE HOISTS SLOWLY UPWARD. KEEP THE ROUTER LEVEL END-TO-END.





BASE SECTION
EST WEIGHT 7,500 LBS
3402 KG



GANTRY SECTION
EST WEIGHT 4,500 LBS
2402 KG